

MALETTI

for the Planet

www.maletti.it



GIOVANNONIDESIGN

Index

OUR VALUES	6
OUR ECOLOGICAL PRODUCTS	20
OUR SANITATION DEVICES	30
OUR SUSTAINABLE MATERIALS	58
OUR VISION OF THE FAIR	64

Maletti Group
P.le G.Maletti, 1
42019 Scandiano (RE) Italy
Tel +39 0522 7631
info@malettigroup.com
www.maletti.it



MISSION & VISION

The history of Maletti is characterized by a constant ability to anticipate the times, managing to launch visionary projects thanks also to the support of the most important designers in the world and a team of professionals with specific skills.

Starting from the 1980s, Maletti began the race towards a 100% sustainable future. A 360 ° update plan for all areas, from the production phase to the choice of materials to the revisitation of the most famous lines in an eco-friendly key. A path of growth and planning to restore sociality to the salons, guarantee more functional and eco-sustainable environments and redevelop existing spaces, up to obtaining the “Carbon Zero” certification for the headquarters (according to UNI ISO 14064) which certifies their neutrality absolute with respect to CO2 emissions.

A revolution guided by one principle: making everyday objects more durable, easier to repair, reuse or recycle.

Maletti

Our Values

Maletti Group has been working for years to meet the needs of those who have decided to adopt a lifestyle and greener work. A change of course that has directed the brand towards the adoption of sustainable systems, eco-friendly materials and 0 km suppliers. The result is a drastic reduction in the environmental impact of all the hairdressing lines without sacrificing the great quality that gives always distinguishes Maletti.

social and environmental



ZERO WASTE



REUSE
RESPONSIBLE



ORIENTATION TOWARDS
NATURAL MATERIALS

1/ We care of our planet

WATER

Our systems are designed to ensure significant water savings, which allows a reduction in water consumption by 30% 70% for each wash..

POWER

Thanks to our LED backlighting systems for the mirrors and the innovative low absorption control units for the wash units we guarantee considerable energy savings e less overheating of the environment.

MATERIALS

Our patented coatings are innovative, ecological, safe for health and designed to last over time. Skai made with 80% sustainable materials and natural substances such as orange peel. Coatings coming from recycled PET; technical wood for 0 km panels.

WASTE

We have prepared our back-washing furniture for the separate collection of professional products so as to allow operators not to have to leave the workstation. Furthermore, we only use packaging made of recycled materials or those deriving from vegetable crops, optimized in terms of weight and volume. to overcome the problem of waste disposal.



2/ We guarantee safety within the work environment

100% SAFE

Our series of devices designed to take advantage of the germicidal and virucidal action of UV-C rays, emitted by special LED lamps, to sanitize objects and the air in closed environments in a continuous cycle even in the presence of people.

UP & DOWN WASH

A wash that we have equipped with a basin height adjustment system that facilitates the operator during treatment and reduces the incidence of diseases of the musculoskeletal system.



3/ We guarantee the right ergonomics for the staff and for customers

UP & DOWN WASH

The special Maletti washing machine equipped with a seat facilitating system and removable armrests designed to favor people with reduced mobility.

STAR CLASS WASH

We have equipped the wash with a horizontal seat lifting system, air massage and neck protector with support.

PMR CASES

Designed to facilitate movement and use by people suffering from disabilities.

STEAM SYSTEM

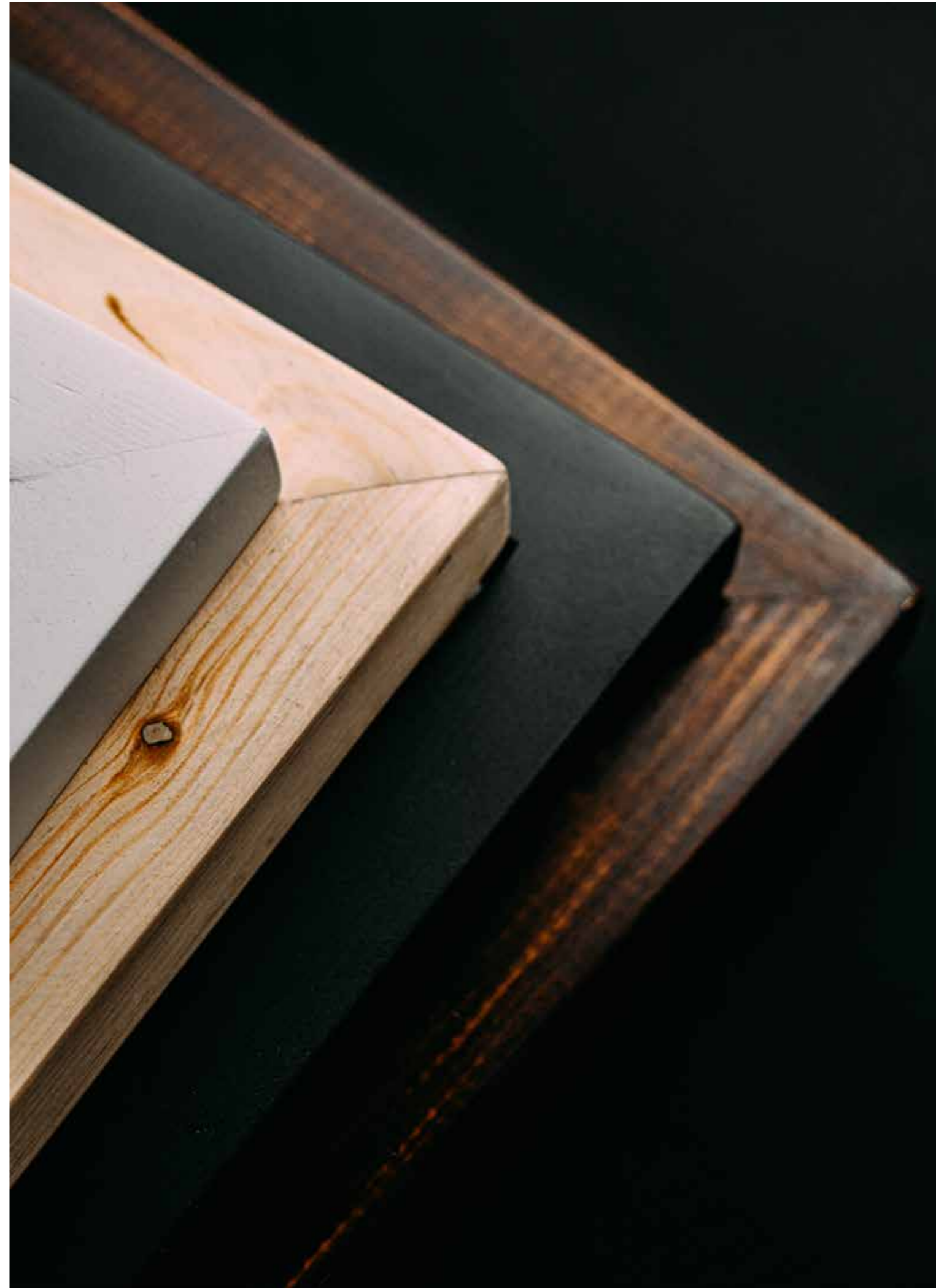
The exclusive Maletti patent that combines the unique benefits of steam to an all-encompassing relaxation experience for mind and body.



4/ We choose the right partners

About 90% of our suppliers are 0 km.

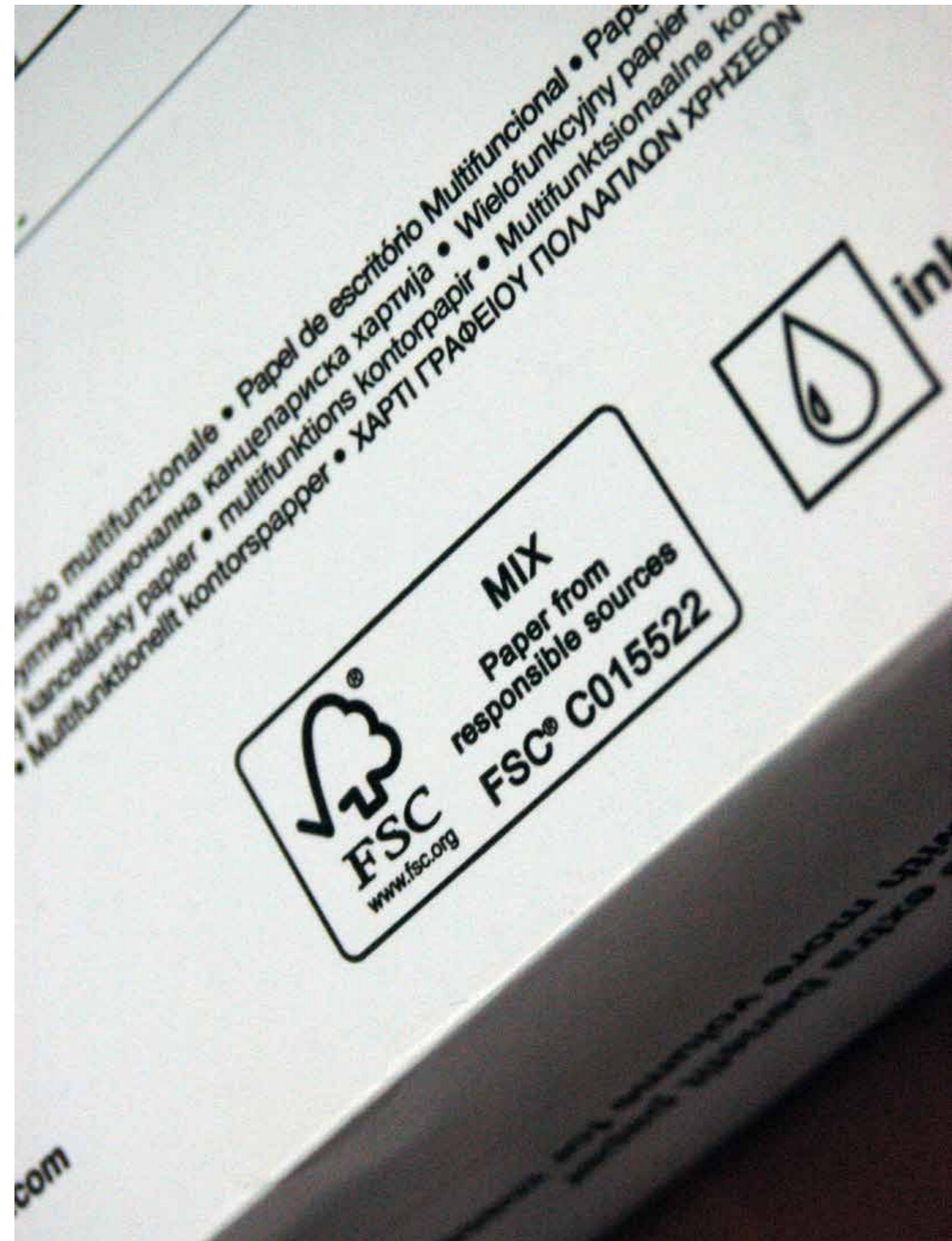
Maletti has been collaborating for years with companies that share the same values of eco-sustainability.



5/ We choose to communicate by promoting the same values that unite us to our customers

Maletti prefers online communication and uses paper only with FSC certification to print the little paper material which produces.

We promote issues related to sustainability on its social channels, showing the importance and centrality of its ethical values.



1980

Already in the 1980s, Maletti initiated the first reflections on sustainability: organizing the company campaign for paper recycling, controlling the temperature inside the rooms and promoting separate waste collection.

2010

The Maletti eco-sustainable project takes shape with the birth of the first three furniture lines united by the use of sustainable materials and great design contents: Green First® and Alu Green® created by Giovannoni Design, Eco Fun signed by Christophe Pillet.

2011

The intuition of a low environmental impact living room was born: a space that perfectly meets the contemporary needs of the most demanding customers, harmoniously combining luxury and elegance and preserving an intimate, comfortable and relaxing atmosphere.

2018

Presentation of Eden Plus, the new frontier of Maletti wellness. The innovative shampoo chair that exploits the beneficial effect of hot steam to enhance the effectiveness of the products during treatments and at the same time reduce water consumption during washing.

Today

Maletti, thanks to the partnership with leading companies in the production of eco-sustainable materials, creates salons, beauty farms and spas all over the world with low environmental impact.

Commitment is
our eco-sustainable
journey

Our range

Maletti furnishings combine exclusivity and comfort and functionality in an ecological vision of well-being that keeps needs at the center of customers and operators.

of eco-sustainable products



Wood

The washing structure is made of FSC-certified multilayer wood from zero km forestry. The panels recall the tones of elm but with veins similar to those of oak and a color with a brighter essence.

Padding and skai

The Maletti lines are made with patented biosynthetic materials and ecological fabrics that guarantee quality and comfort while respecting the environment.



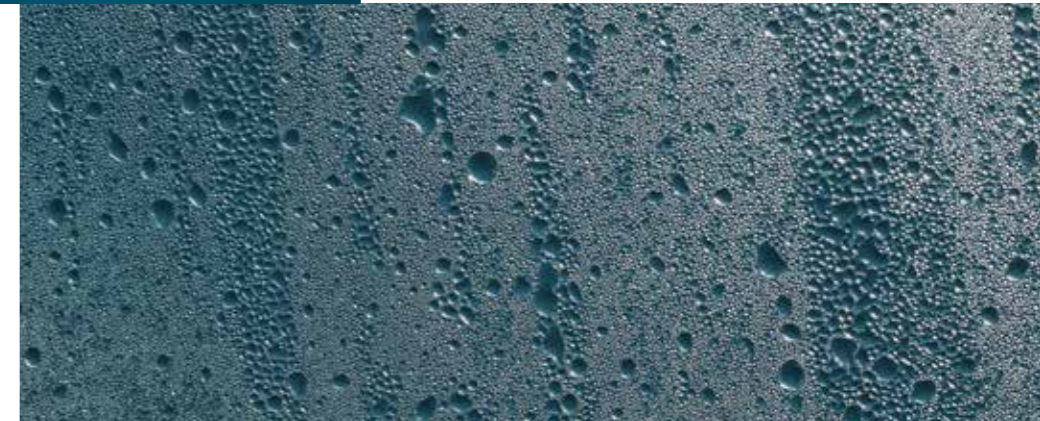
Water saving

Water saving systems of Maletti Group allow a reduction of water consumption up to at 6/7 liters / minute.



Steam

All Maletti wash units can be combined with Vapomist (1 and 2) and Cap to bring the benefits of steam to your salon and offer your customers a premium wellness experience.



Organic oil

Maletti uses biodegradable oils (over 80%) on the hydraulic pumps installed on the chairs of the eco collection. Natural-based oil designed to reduce lubricant consumption, disposal costs and environmental impact.



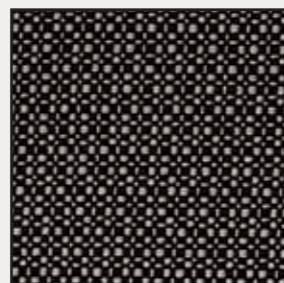
CHOSEN COLORS / MATERIALS
skay and fabric



Reviva Iris 403



Reviva Iris 603



Reviva Iris 406



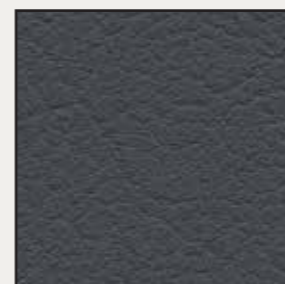
Reviva Iris 308



Evida Birch 041



Evida Smoke 042



Evida Anthracite 031

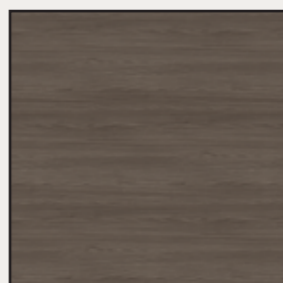


Skay da Arance

CHOSEN COLORS / MATERIALS
metals and wood



Cleaf Fronda S164



Cleaf Fronda S156



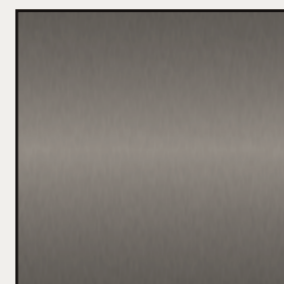
Light multilayer



Dark painted
multilayer edge



Pearl Satin Metal



Painted Metal
RAL 7006

CONFIGURATIONS
OF COLORS AND MATERIALS
with shades of CHOCOLATE



- 1_Painted Metal RAL 7006
- 2_Dark painted multilayer edge
- 3_Cleaf Fronda S156
- 4_Reviva Iris 603
- 5_Evida Birch 042
- 6_Evida Smoke 042

CONFIGURATIONS
OF COLORS AND
OF MATERIALS
WITH NUANCED
CAPPUCCINO



- 1_Reviva Iris 403
- 2_Light Multilayer
- 3_Cleaf Fronda S164
- 4_Evida Smoke 042
- 5_Painted Metal RAL 7006

CONFIGURATIONS
OF COLORS AND
OF MATERIALS
WITH NUANCED
MILK



- 1_Reviva Iris 403
- 2_Light Multilayer
- 3_Cleaf Fronda S164
- 4_Evida Birch 041
- 5_Pearl Satin Metal

CONFIGURATIONS
OF COLORS AND
OF MATERIALS
WITH NUANCES
ORANGES



- 1_Pearl Satin Metal
- 2_Reviva Iris 308
- 3_Light Multilayer
- 4_Cleaf Fronda S164
- 5_Skay da Arance

CONFIGURATIONS
OF COLORS AND
OF MATERIALS
WITH NUANCES
BLACK PEPPER



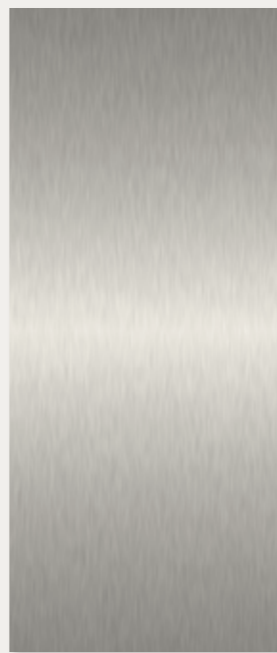
- 1_Pearl Satin Metal
- 2_Reviva Iris 406
- 3_Dark Painted Multilayer Exdge
- 4_Cleaf Fronda S156
- 5_Evida Anthracite 031

CONFIGURATIONS
OF COLORS AND
OF MATERIALS
with oak wood

Light multilayer



Cleaf fronda S164



Pearl satin metal

CONFIGURATIONS
OF COLORS AND
OF MATERIALS
with Elm wood

Dark painted multilayer
exdge



Cleaf fronda S156



painted metal RAL7006



6/

The Maletti Codetta with incomparable comfort, high performance with a prestigious design and ecological materials.

- FSC certified plywood
- Water-saving hand shower: - 6/7 liters per minute (50% less with each wash)
- structure in recyclable aluminum
- eco-sustainable coating



BASIN white or black
 WOOD oak or elm
 UPHOLSTERY by choice
 of skay or eco-sustainable
 fabric

WASHUNIT GREEN STAR CLASS

AIR P45772
 COMFORT P457752

Green Star Class perfectly embodies the values of sustainable beauty embraced by Maletti.

The wash unit is made of FSC-certified plywood, equipped with a water-saving shower head that saves 6/7 liters per minute (50% less at each wash) and a recyclable aluminum undertail.

It is available in two versions:
 AIR with air massage and electric leg rest
 COMFORT with electric legrest
 CODETTA white or black
 WOOD oak or elm
 COVERING of your choice

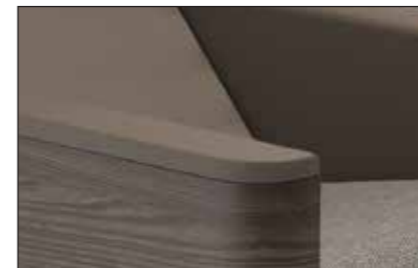
- Water saving system.
- Eco-friendly skay upholstery
- Fabric upholstery from apple scraps.
- Eco-friendly padding
- Recyclable aluminum.

DIMENSIONS
 ↑ 97 cm ↗ 126-183 cm → 73 cm

COLOR AND MATERIAL
Oak (with contrast)



other colors available
Elm tree



other colors available
Oak (no contrast)





BASIN white or black
WOOD oak or elm
UPHOLSTERY by choice
of skay or eco-sustainable
fabric

WASHUNIT UP & DOWN

AIR MASSAGE 45531
COMFORT 45541

Up&Down combines the safeguarding of staff health and customers with an eco-sustainable design.

The wash unit is equipped with a basin height adjustment system to reduce the incidence of diseases of the musculoskeletal system and a seated support system with removable armrests to facilitate access for people with reduced mobility. Available in version with air massage and electric legrest, or alone with electric legrest.



DIMENSIONS
↑ 95-119 cm ↗ 129-160 cm → 67 cm

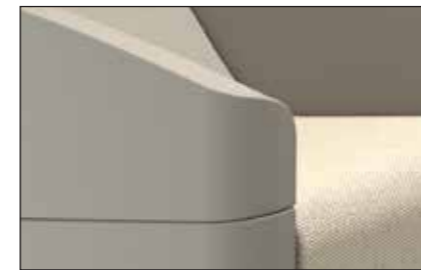
IT IS AVAILABLE IN TWO VERSIONS: → AIR WITH AIR MASSAGE AND ELECTRIC LEGREST
→ COMFORT WITH ELECTRIC LEGREST
→ WHITE OR BLACK BASIN
→ OAK OR ELM WOOD
→ COVERING OF YOUR CHOICE

COLOR
DARK VERSION



Armrest
removable

other colors available
Clear





COLOR AND MATERIAL
Oak (with contrast)



WASHUNIT NEW ECO

New Eco is...

The wash unit is made of FSC-certified plywood, equipped with a hand shower with water saver that allows you to save 6/7 liters per minute (50% less at each wash) and a recycled aluminum underneath that allows the accommodation of shampoos and other products.

It is available in the version with air massage and electric legrest, version comfort and fixed version.

DIMENSIONS
↑ 100 cm ↗ 130-166 cm → 66 cm

- Water saving system.
- Skay coating obtained from orange peel.
- Fabric cover that comes from recycled materials
- Organic padding.
- recyclable aluminum.

other colors available
Elm tree



other colors available
Oak (no contrast)



EXAMPLES OF APPLICATION



Green Star Class

VAPOMIST 1

60875

VAPOMIST 2

60882

IGLOO

6085



New Eco



Hub

The nature of steam for the well-being of the hair.

Trolley with integrated steamer. Structure in galvanized and powder coated steel. Equipped with a set of swiveling wheels and handle. Removable demineralized water container. Integrated touch control panel with ignition / production / water level indication.

rolley with integrated steamer and steel structure. Equipped with swivel wheels and carrying handle. Removable demineralized water container. Integrated touch control panel. Production of atomised cold water. Timed regulation system for the quantity of steam delivered. Integrated water disinfection system with high intensity UV lamp. Integrated 2 in 1 dispenser for the distribution of hot steam and cold atomization.

Igloo shell in transparent polycarbonate with operator access door. Available for all Maletti wash units.

DIMENSIONS
 ↑ 63 cm ↗ 18 cm → 34 cm

DIMENSIONS
 ↑ 63 cm ↗ 18 cm → 44 cm

DIMENSIONS
 ↑ 63 cm ↗ 58 cm → 29 cm



PORTABLE WASHUNIT HUB

Wash unit on wheels without the need for floor connection.

Designed to be integrated into a reclining chair, equipped with shower with water saving device that allows you to save 6/7 liters per minute (50% less a. Corian top and laminate structure. Equipped with tanks of water with a capacity of 15 and 12 liters, with electrical connection or with battery (average duration 20 cycles).



DIMENSIONS
 ↑ 106 cm ↗ 104-150 cm → 60 cm

COLOR AND MATERIAL
Oak



other colors available

Elm tree





ARMCHAIR GREEN HUG

P3175

Green HUG is synonymous with comfort and elegance with an eye to sustainability.

The swivel work chair has a veneered plywood frame with base in recycled aluminum and padding in natur-bio expanded polyurethane with 20% natural polyols.

DIMENSIONS
↑ 79-90 cm ↗ 61 cm → 61 cm

COLOR AND MATERIAL
Oak



other colors available

Elm tree





ARMCHAIR GREEN HUG RECLINABLE

Green Hug synonymous with comfort and elegance with attention to sustainability.

The armchair has a back in FSC-certified laminated plywood.
 The backrest support bar is made of steel.
 Padding in organic polyurethane foam.
 Reclining backrest with adjustable headrest.
 Hydraulic pump that can be supplied with 80% biodegradable oils.

DIMENSIONS
 ↑ 100 cm ↗ 86-108 cm → 60 cm

COLOR AND MATERIAL
Oak



other colors available

Dark version





ARMCHAIR **ECO FUN**

Eco Fun Chair, the armchair designed by Christophe Pillet, is a perfect example of Beauty Design.

Furniture with a light and young soul that embellishes spaces while respecting the environment. The seat is made of recycled plastic and molded polyurethane foam with insert metal on a reusable aluminum base.

DIMENSIONS
 ↑ 85-96 cm ↗ 62 cm → 63 cm

COLOR AND MATERIAL
Clear (with contrast)



other colors available
Dark version



other colors available
Clear (no contrast)





TECHNICAL TABLE 1 P

1 seat technical table with removable mirror
48 cm in diameter.

Part in FSC certified wood with top in extra-clear tempered glass.
Equipped with stainless steel footrest and hairdryer holder.



DIMENSIONS
↑ 80 cm ↗ 35 cm → 100 cm

COLOR AND MATERIAL
Oak



other colors available
Elm tree





WALL STYLING UNIT 1P **OBLÒ**

Minimal design and maximum durability.

Wall shelf with low energy consumption LED backlit mirror.
FSC-certified wood facade panel. Phon holder to be fixed to the wall.

DIMENSIONS
↑ 180 cm ↗ 30 cm → 95 cm



COLOR AND MATERIAL
Oak

other colors available

Elm tree





WALL STYLING UNITS 2P **OBLÒ**

Minimal design and maximum durability.

Mirrors with supporting structure in melamine wood th. 25mm.
5 mm front mirror, secured with an FSC certified wood frame.
Low energy consumption LED lighting.
Fastening of bayonet quick coupling brackets.

Low cabinet with structure and shelves in FSC certified wood with extra-clear glass top transparent tempered.



DIMENSIONS: LOW CABINET
↑ 80 cm ↗ 35 cm → 260 cm

DIMENSIONI: MIRROR
↑ 95,5 cm ↗ 4 cm → 95,5 cm

COLOR AND MATERIAL
Oak



other colors available

Elm tree





DESK PMR

The crates are designed to meet PMR accessibility specifications for people with reduced mobility.

Reception desk with structure in FSC certified wood. Adapted to accommodate people with reduced mobility.



DIMENSIONS
↑ 80 cm

COLOR AND MATERIAL
Oak



other colors available

Elm tree





EXHIBITION BACKWASH CABINET

Multifunctional design. Backwash furniture, manufactured made of FSC-certified wood, they are designed for recycling, including the washbasin with mixer that reduces water consumption.

Moble backwash set up for the installation of display furniture. Entirely made of FSC certified wood, water repellent, top and front in transparent glass. Equipped with sink and mixer to reduce water consumption, low module with dedicated space for separate waste collection.

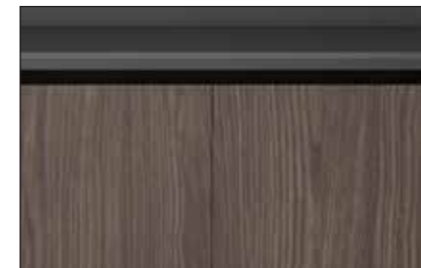
DIMENSIONS
 ↑ 211 cm ↗ 40 cm → 240 cm

COLOR AND MATERIAL
Oak



other colors available

Elm tree





MAGNETIC EXHIBITOR

Magnetic bottom display with 5 shelves.

Matt white or black structure. Shelves available in black, black glass or transparent. Magnetic graphics optional.

DIMENSIONS:
 ↑ 198 cm ↗ 23 cm → 80 cm

7/ HUB: the wash unit on wheels without the need for a connection on the ground.



Our range

The devices of the 100% Safe line offer a totally safe environment for operators and customers thanks to UVC technology.

of products for security



UVC-SCRIGNO TROLLEY
sterilizes tools such as brushes, combs, scissors in seconds.



UVC-MANHATTAN TROLLEY
integrates a UV-C ray drawer for thorough sterilization of instruments.



PLEXI SEPARATORS TUDOR
guarantees the correct distance both for the operator and the customer and between the wash units.

↑ 105 cm ↗ 16 cm → 32 cm ↑ 43,1 cm ↗ 5,25 cm → 12,4 cm



UVC-TOTEM AND UVC-MINI TOTEM
they also sanitize the air in a continuous cycle in the presence of people by exploiting the germicidal and virucidal action of UVC rays.



STATION AND KUBETTO
allows you to measure the temperature, sanitize shoes and sanitize the hands of those arriving from the outside in a single moment.



BLOCK
it cuts down 99% of the bacterial load from everyday objects.

Our materials

The Maletti Group research and development department works to the creation of low environmental impact materials with excellent technical characteristics, favoring partnerships with suppliers who share yours same values in terms of eco-sustainability.

attentive to the environment

LEATHER EFFECT a biological solution

Resilient, ecological and scalable are the relevant adjectives for this new range of biosynthetic products. Over 80% of the components used are made with natural and renewable materials. Maletti proposes a skai in which the conventional phthalate plasticizers have been replaced by a new type of plasticizer based on renewable raw materials. It also incorporates an organic cotton backing that meets stringent GOTS standards.



LEATHER EFFECT a biological solution







Resilient, ecological and scalable are the relevant adjectives for this new range of biosynthetic products. Over 80% of the components used are made with natural and renewable materials. Maletti proposes a skai in which the conventional phthalate plasticizers have been replaced by a new type of plasticizer based on renewable raw materials. It also incorporates an organic cotton backing that meets stringent GOTS standards.



SOFT TOUCH

sense for nature

Recyclable, ecological, safe for health, non-toxic, free from: solvents, pvc, pu, pfc, formaldehyde, plasticizers, phthalates, heavy metals, bpa, allergens, anti-bacterial additives, biocides, flame retardant substances. This coating chosen by Maletti is resistant to normal disinfectant agents that contain alcohol, aldehydes, quaternary ammonium compounds, oxygenating agents, alkylamines as active ingredients and is characterized by high resistance to stains.

-  **DURABILITY**
50,000 Martindale
-  **PILLING**
4-5 (ISO 1-5)
-  **LIGHTFASTNESS**
7
-  **WARRANTY**
10 years
-  **PRODUCED IN**
Holland
-  **SUSTAINABILITY**
Greenguard Gold, HPD, EPD

PELLEMELA

the new time of apples

Skai made in Trentino Alto Adige with 50% apple peel waste, Maletti starts from the interest in this form of circular economy to be used for its eco products. Renamed as "pellemela", the ecological leather produced with this process is made according to the quantities requested by the customer.

RECYCLED FABRICS

Maletti proposes a new type of coverings from recycled and waste PET to be used in the seats accompanied by skai to create greater comfort. The fabric features a fluorocarbon-free, eco-friendly, water-repellent and quick-drying finish. It also provides resistance to chlorine, sea water and artificial atmospheric agents and is fireproof. In addition to its technical characteristics, it is also distinguished by a softness to the touch.

ECO TECHNICAL WOOD



Maletti chooses wood-based panels whose faces are covered with decorative papers. The panels reproduce the wood of elm, a plant that was widely used in the Italian countryside until the mid-1900s. The veins are similar to those of oak but the color of the gasoline is more vivid. The finish is the result of extensive research and development, an artisan vision with attention to detail and an industrial vision in the evolution of technique.

ELM TREE



OAK



reaction to fire



EU regulations



Regolamenti UE

BIOLOGICAL FOAM

The padding used is certified organic, with a high% of bio-based carbon. The most environmentally friendly material in the industry.

ORGANIC OIL

Maletti has chosen to use biodegradable oils (over 80%) for hydraulic pumps and guides for sliding doors installed on work chairs: an eco-oil range based on natural esters and synthetics designed to reduce lubricant consumption, disposal costs and environmental impact guarantee the best performance.

RECYCLABLE ALUMINUM

Our idea

An experimental journey that accompanies the client in a dimension of well-being for the entire duration of the stay in the salon.

of the experiential salon

The showcases of the show will be equipped with transparent films that will transform the windows into LED screens on which to project videos and images.

At the entrance, the customer will be welcomed in a reception area that will be disinfected with 100% Safe devices (Kubetto, Block, Totem) and furnished with PRM supports.

In a private and intimate location, surrounded by displays and furniture with low consumption light, specific advice will be offered with hot drinks, anti-pollution fruit juices and small local pastries.

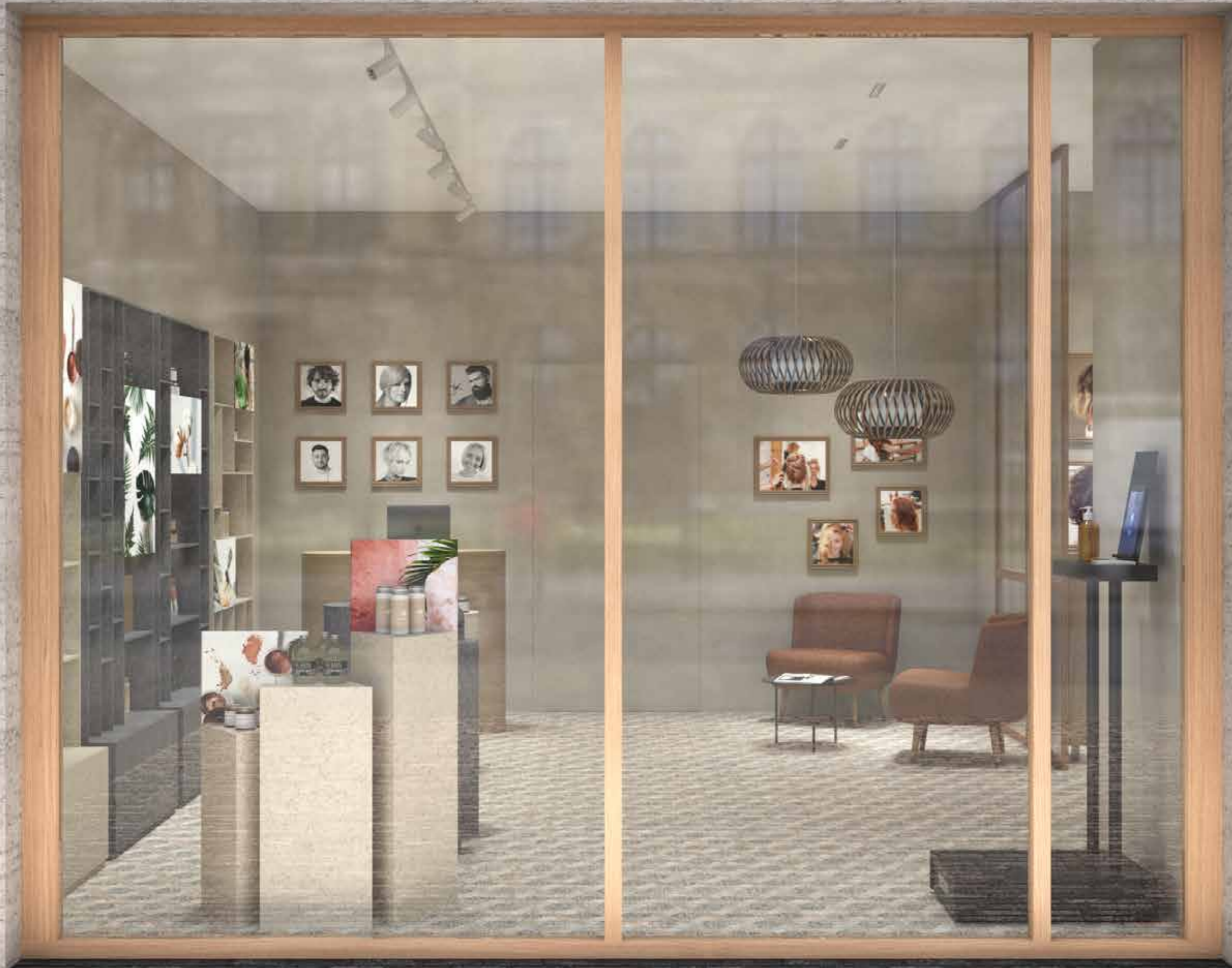
Customer relaxation area with hot steam treatments or Up & Down wash unit with PMR functionality for employee health, Water Saver taps and Tudor separator. The Business Class 2.0 cabin will offer a superior experience of well-being and privacy for the most demanding customers.

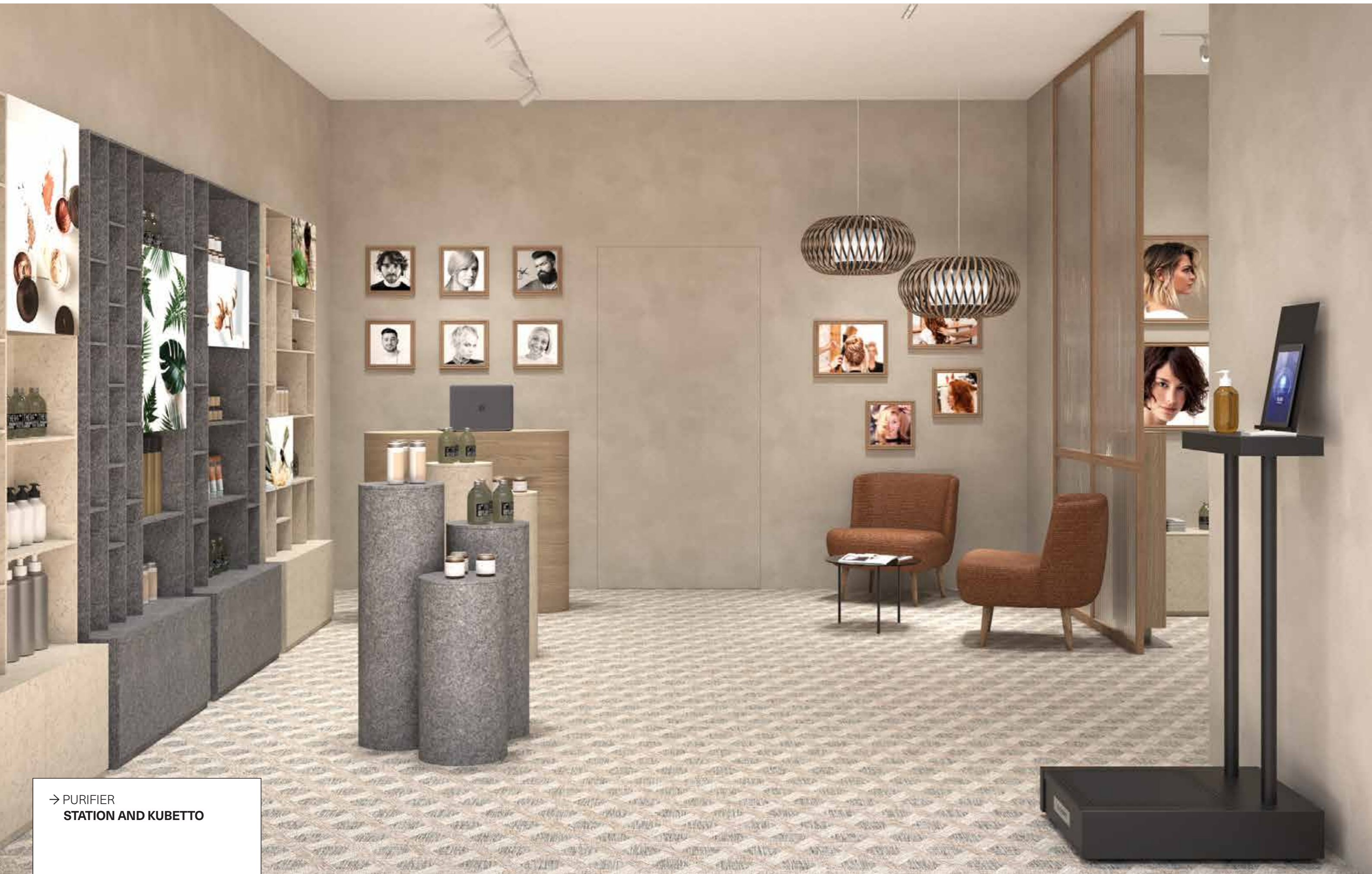
After washing, you will move on to the color, cut and fold station, embellished with backlit LED shelves or Minimal wooden shelves. The environment and equipment will be disinfected with UVC-Manhattan, Scigno UVC Box, UKI phon light and Sanitizing Totem.

Before the exit, in the sales area, the exhibitors and the monitor present will show the characteristics of the products that can be purchased, for which recycled cartons or organic bags will be used.

Next to the cash desks with PRM supports, an information center will be positioned where you can get information on restaurants, places to visit and major initiatives to experience at the fair.







→ PURIFIER
STATION AND KUBETTO



→ DESK RECEPTION PMR



- DESK RECEPTION PMR
- TECHNICAL TABLE 1 P
- RMCHAIR GREEN HUG



- WALL STYLING UNIT 1P **OBLÒ**
- ARMCHAIR **GREEN HUG**
- WALL STYLING UNITS 2P **OBLÒ**
- TROLLEY **SCRIGNO**
- AIR PURIFIER **UVC-TOTEM**



- ARMCHAIR **GREEN HUG**
- WALL STYLING UNITS 2P **OBLÒ**



- WALL STYLING UNIT 1P **OBLÒ**
- ARMCHAIR **GREEN HUG**
- AIR PURIFIER **UVC-TOTEM**



- AIR PURIFIER UVC-TOTEM
- TROLLEY SCRIGNO
- WASH UNITS
GREEN STAR CLASS+IGLOO
- EXHIBITION
BACKWASH CABINET



- AIR PURIFIER **UVC-TOTEM**
- TROLLEY **SCRIGNO**
- WASH UNITS
UP & DOWN+IGLOO
- EXHIBITION **BACKWASH**
CABINET



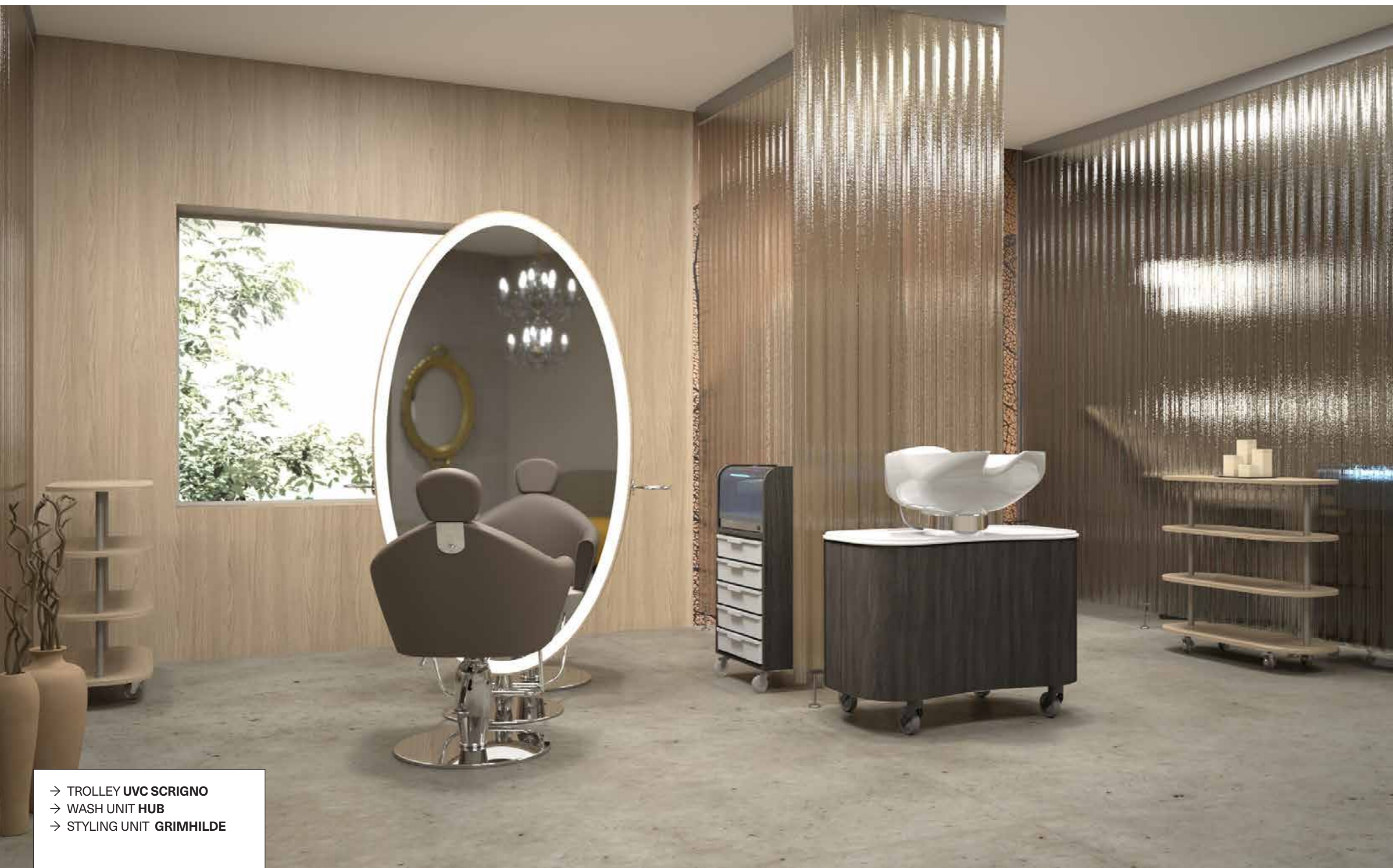
→ TECHNICAL TABLE 1 P
→ ARMCHAIR GREEN HUG



→ STYLING UNIT **ECO ATELIER**
→ ARMCHAIR **ECO GREEN FUN**



- STYLING UNIT **ECO ATELIER**
- ARMCHAIR **ECO GREEN HUG**
- WASH UNIT **ECO GREEN FIRST**



- TROLLEY **UVC SCRIGNO**
- WASH UNIT **HUB**
- STYLING UNIT **GRIMHILDE**



- WASH UNIT
GREEN STAR CLASS+IGLOO
- ARMCHAIR
GREEN HUG RECLINABLE
- WALL STYLING UNIT 1P OBLÒ

A large white sailboat is shown from a low angle, sailing on a deep blue sea under a clear, bright blue sky. The sail is partially visible on the right side of the frame. The water is calm with a slight wake.

a Edgardo Maletti

all'impalpabile aria dell'oceano,
alle frizzanti onde del Mediterraneo,
alle orme sulla sabbia che fugge,
alla scia di poppa
che racconta la nostra strada.

*to the tenuous air of the ocean,
to the sparkling waves
of the Mediterranean sea
to the tracks in the vanishing sand,
to the wake of a ship
which tells our way.*

*a l'air impalpable de l'océan,
aux vagues scintillantes de la Méditerranée,
aux traces de pas sur le sable fuyant,
au sillage de poupe qui raconte
notre chemin.*